

MIDSHIP SECTION

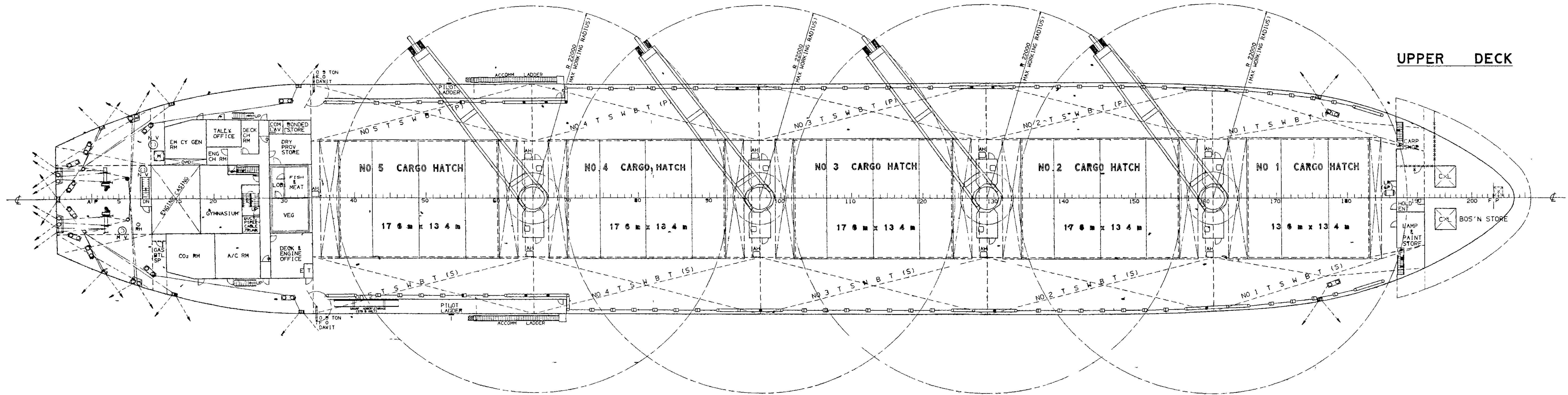
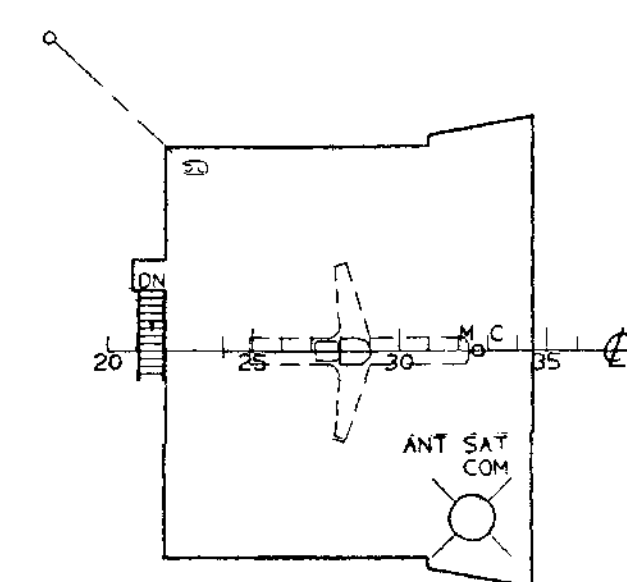
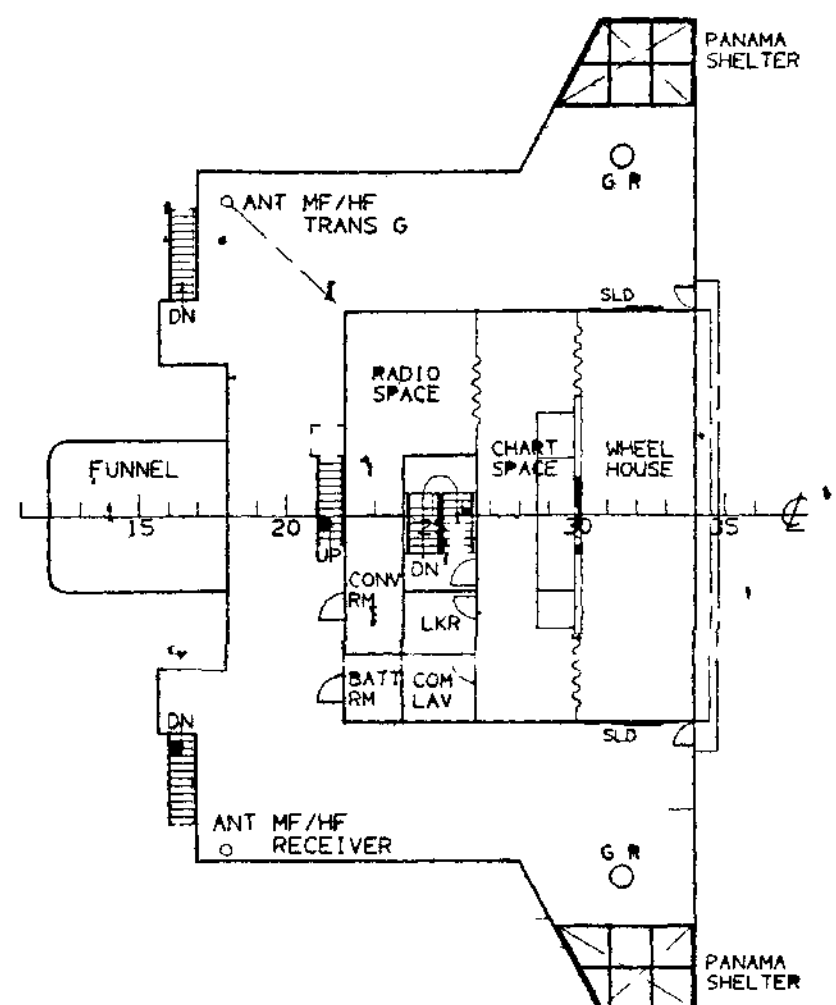
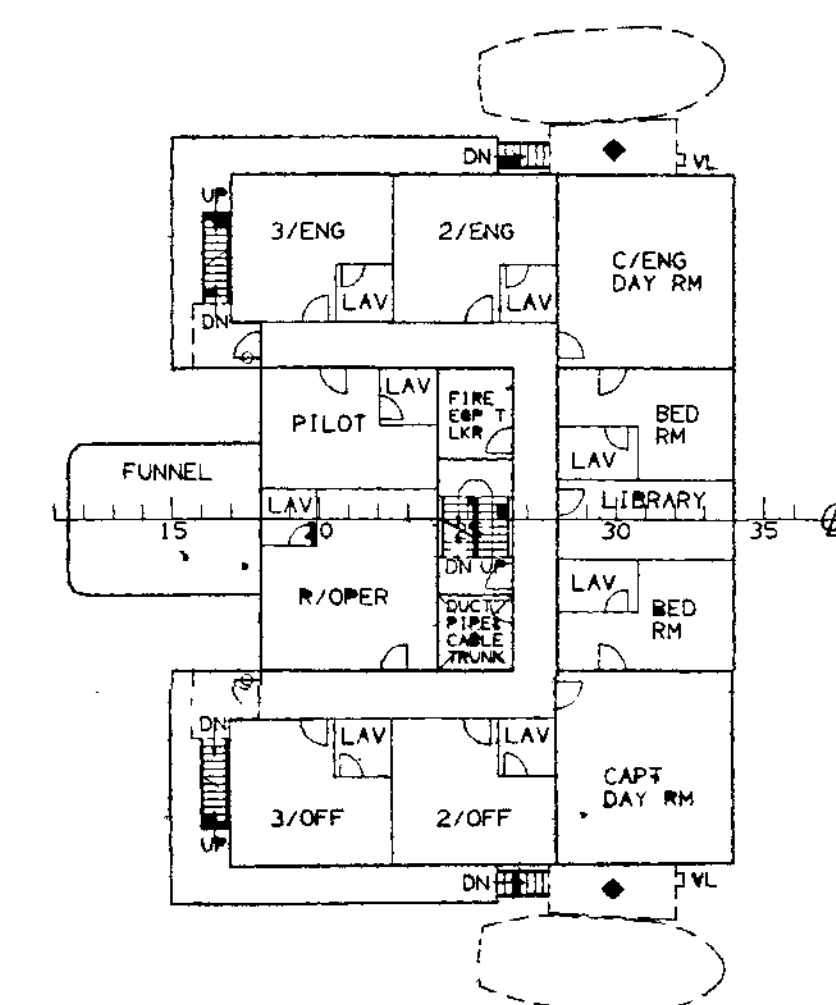
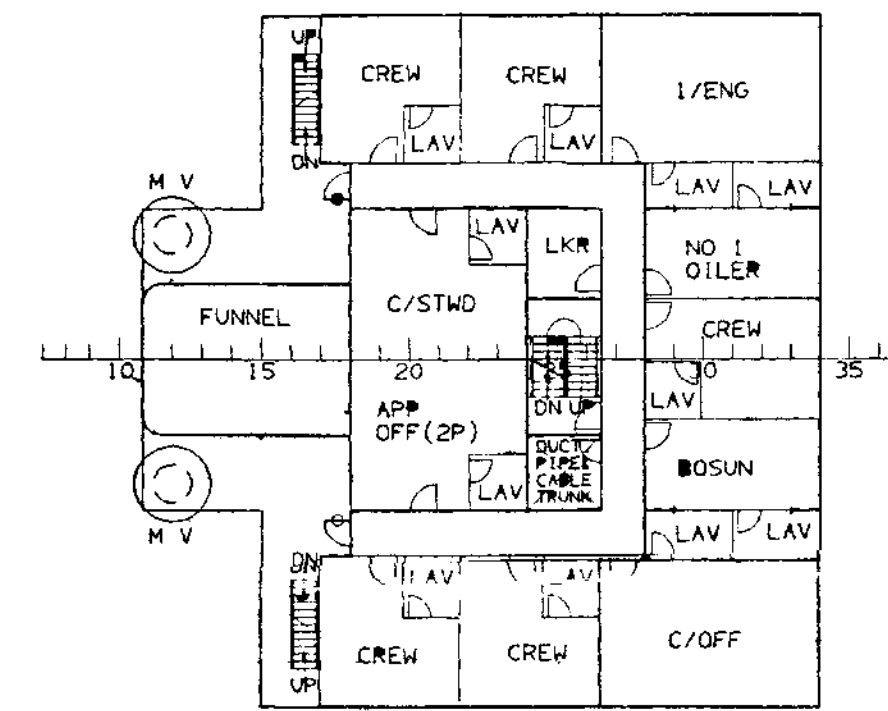
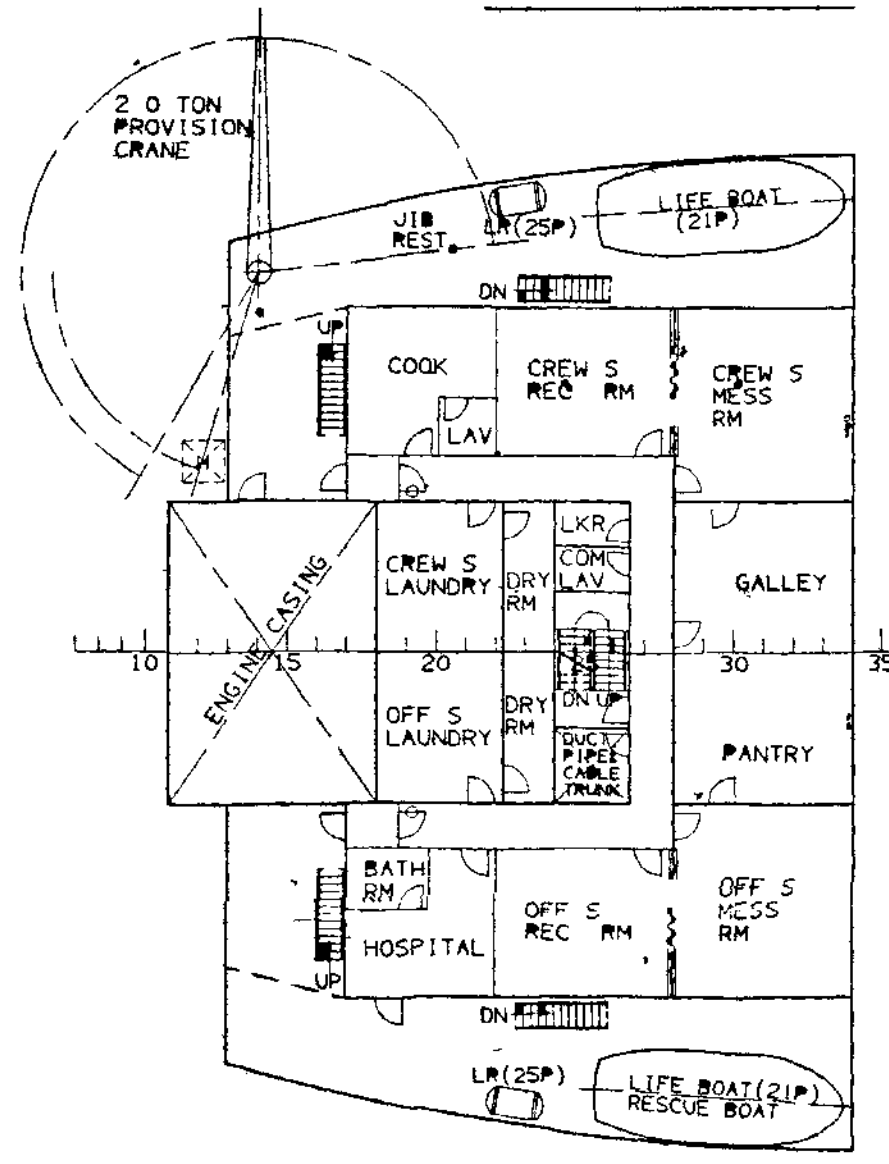
'A' DECK

'B' DECK

'C' DECK

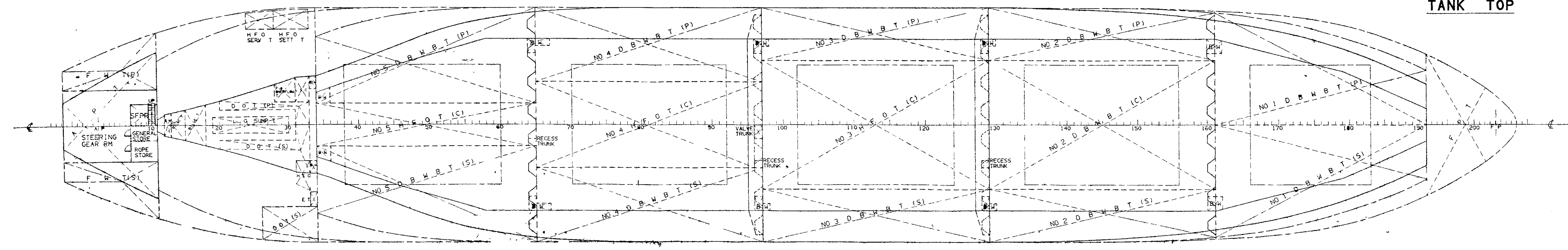
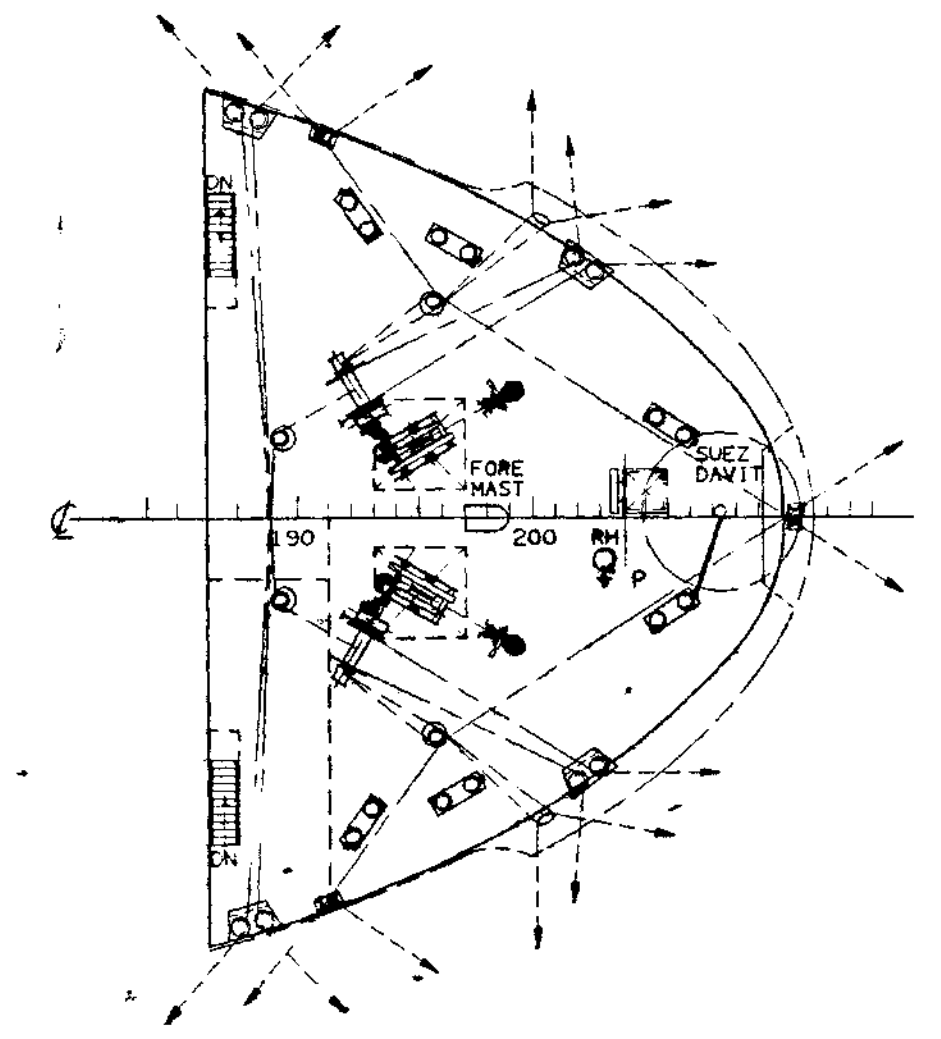
NAV BRI DECK

COMPASS DECK



UPPER DECK

F'CLE DECK



TANK TOP

PRINCIPAL PARTICULARS

LENGTH O A	167 000 m
LENGTH B P	158 000 m
BREADTH (MLD)	26 200 m
DEPTH (MLD)	13 800 m
DESIGN DART (MLD)	9 900 m
SUMMER DART (EXT)	9 9155 m
DEADWEIGHT AT SUMMER DRAFT	27368 7 MT
GROSS TONNAGE	16252 TON
NET TONNAGE	9669 TON
PANAMA-PC/UMS, NET TONNAGE	13735 TON
SUEZ GROSS TONNAGE	17448 25 TON
NET TONNAGE	15281 44 TON
MAIN-ENGINE	MAN-B&W 5L50MC
	7,450 PS X 122 0 RPM AT MCR
	6,705 PS X 117 8 RPM AT NCR
SERVICE SPEED ON SUMMER DRAFT AT NCR	14 21 KTS
W/ 15% S M	

CLASSIFICATION
 *KRS - Bulk Carrier 'ESP', *KRM1 - UMA
 Grain/Coal/Log/Ore (H/E Hold Nos 2,4 may be empty)

CALL LETTER HJAW
 OFFICIAL NUMBER ICR-

COMPLEMENT				
CLASS	DECK	ENG	OTHERS	TOTAL
CAPTAIN	CAPTAIN	C/ENG	R/OPER	2
SR OFF	C/OFF	L/ENG	PILOT	3
JR. OFF	2/OFF	2/ENG	APP OFF(2)	7
PETTY OFF	3/OFF	3/ENG	NO 1 OILER	3
CREW	BOSUN	CREW(3)	C/STWD	6
			COOK(1)	
TOTAL				21 P

B-2 FINISHED PLAN

APP BY: [Signature] DATE: JAN 10TH 1996 SCALE: 1/200 WORK NO: N 625

TITLE: DWT 27 000 MT BULK CARRIER

CHK BY: [Signature]

DWG NO: 0003 120

DWN BY: [Signature]

REV NO:

TEL NO: 410 3405

GENERAL ARRANGEMENT

M V 'HANJIN ANTWERP'

HANJIN HEAVY INDUSTRIES CO., LTD